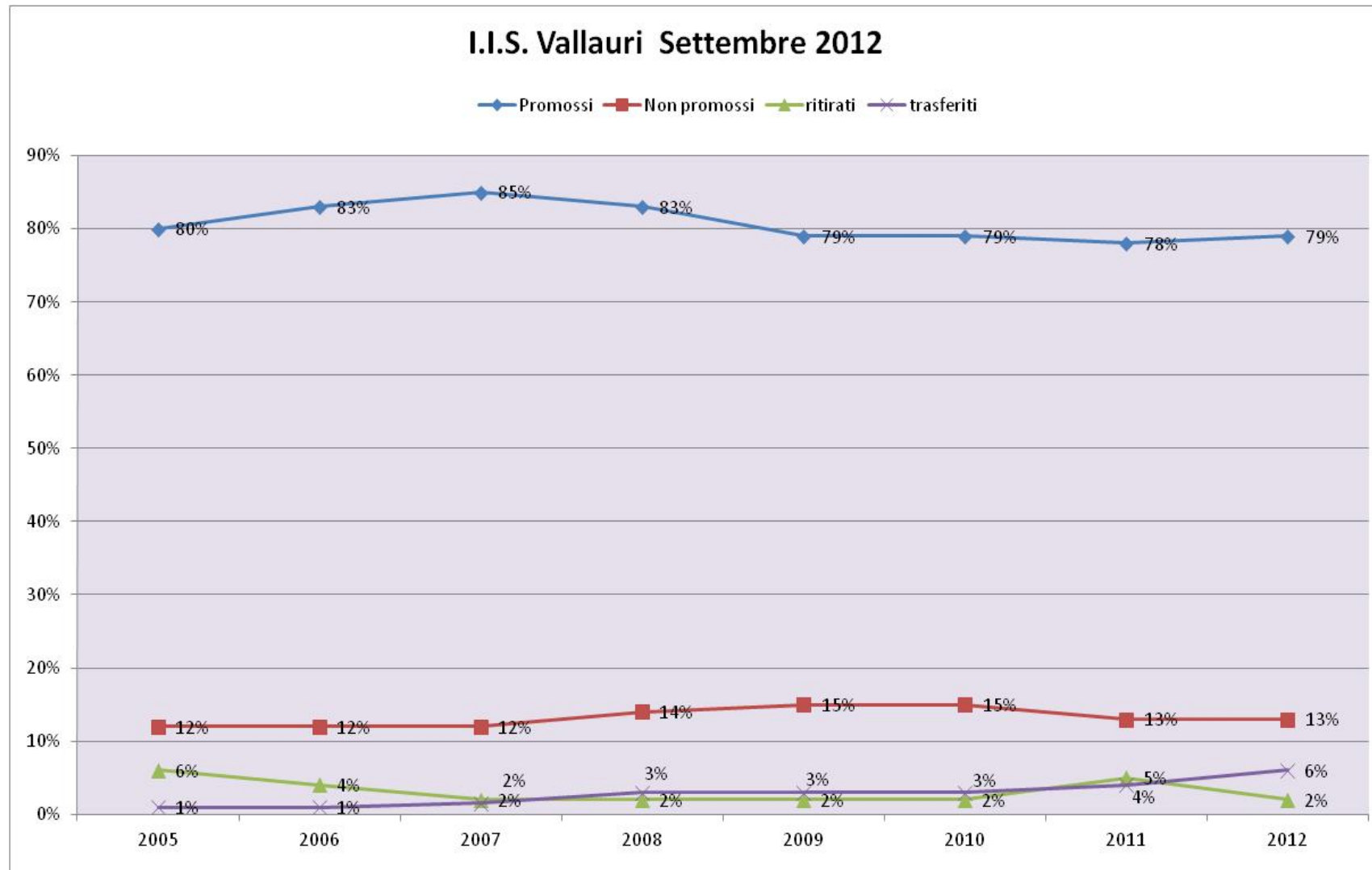


**SCRUTINI FINALI
RISULTATI SETTEMBRE
A.S. 2011/2012**

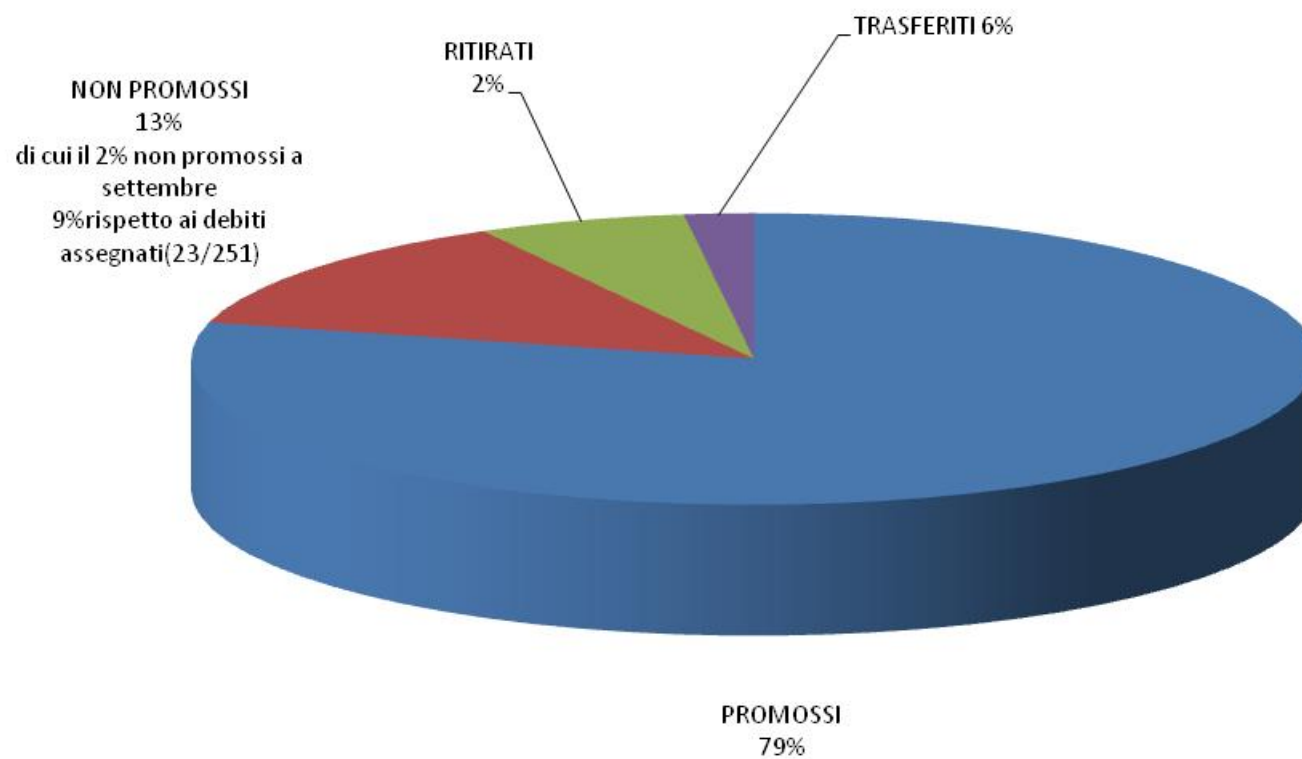
RISULTATI COMPLESSIVI



DATI

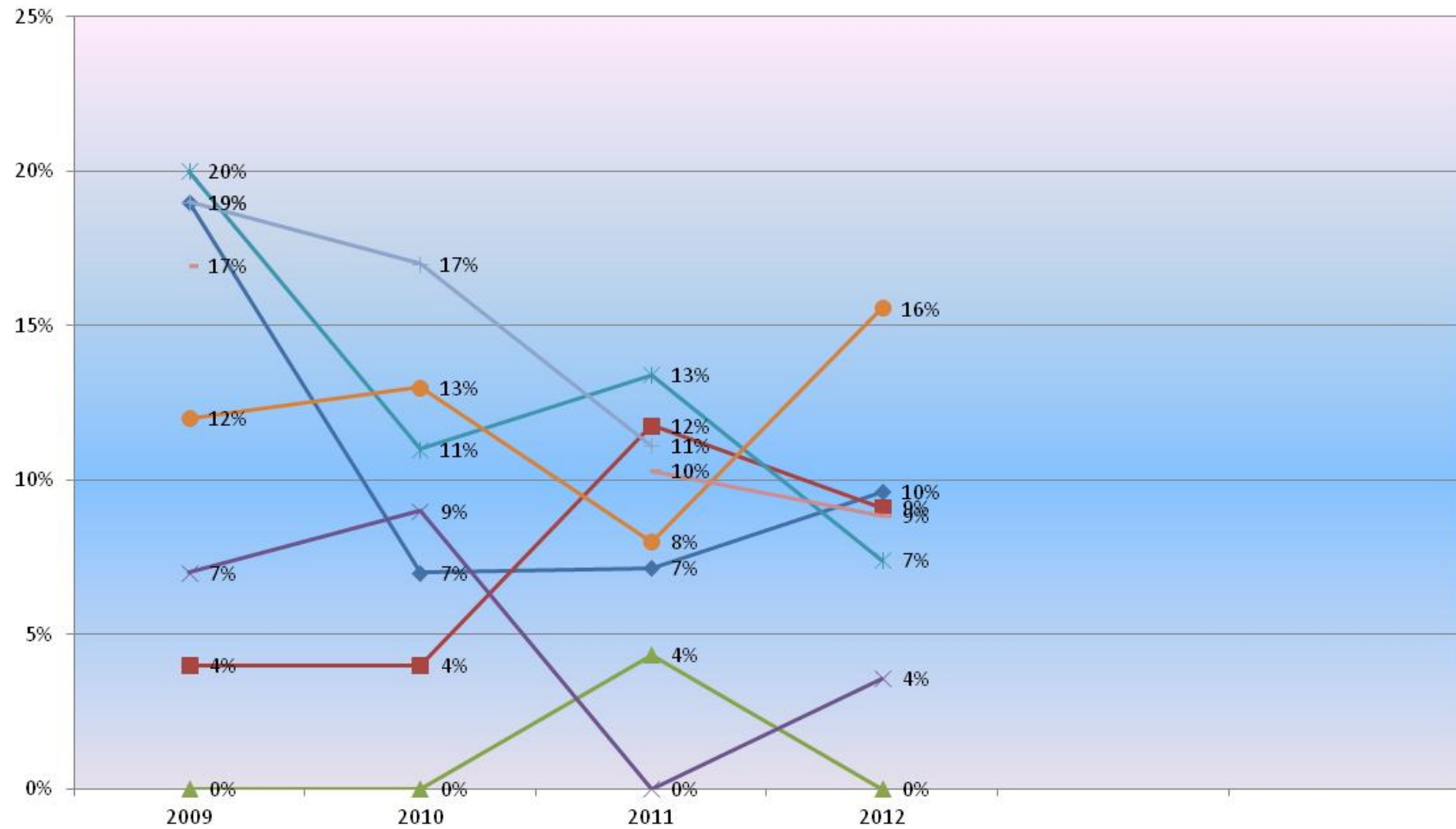
SETTEMBRE	classe	promossi	non promossi	trasferiti	ritirati	n°allievi	promossi	non promossi	trasferiti	ritirati
	BIENNIO	348	82	44	6	480	73%	17%	9%	1%
	LST	137	11	5	0	153	90%	7%	3%	0%
	INF	57	17	4	4	82	70%	21%	5%	5%
	ELE	82	6	3	5	96	85%	6%	3%	5%
	MEC	96	8	1	7	112	86%	7%	1%	6%
	IGEA	169	19	12	2	202	84%	9%	6%	1%
	totali	889	143	69	24	1125	79%	13%	6%	2%
	totali iti-lst	720	124	57	22	923	78%	13%	6%	2%
	totali igea	169	19	12	2	202	84%	9%	6%	1%

VALLAURI SCRUTINIO SETTEMBRE 2012 SCRUTINATI 1125 ALUNNI



%RESPINTI /Giudizio Sospeso Settembre 2012

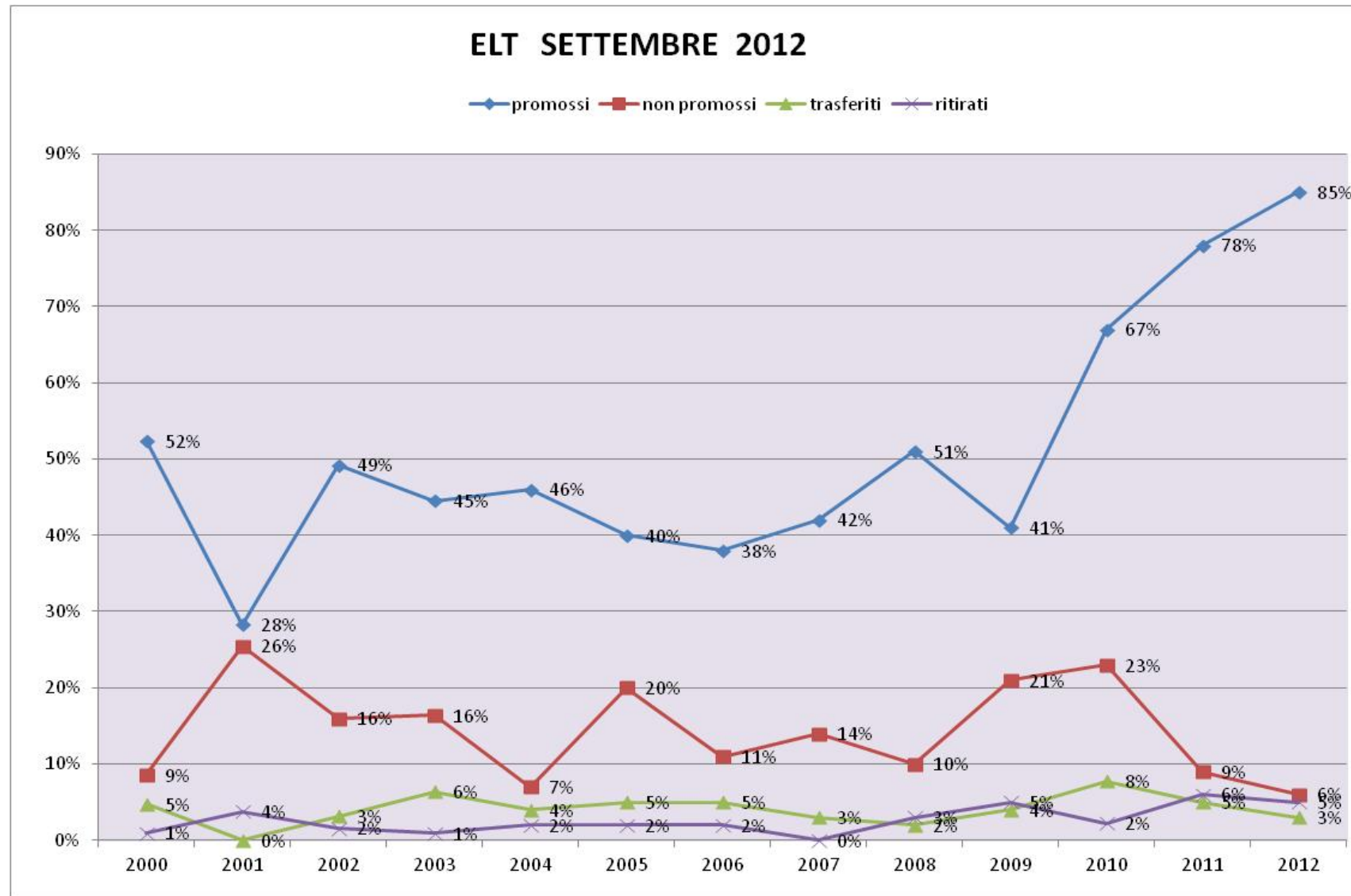
◆ biennio ■ LTS ▲ INF ✕ ELE ✕ MEC ● IGEA ✕ IPC — TOTALE



RISULTATI PER SETTORE:

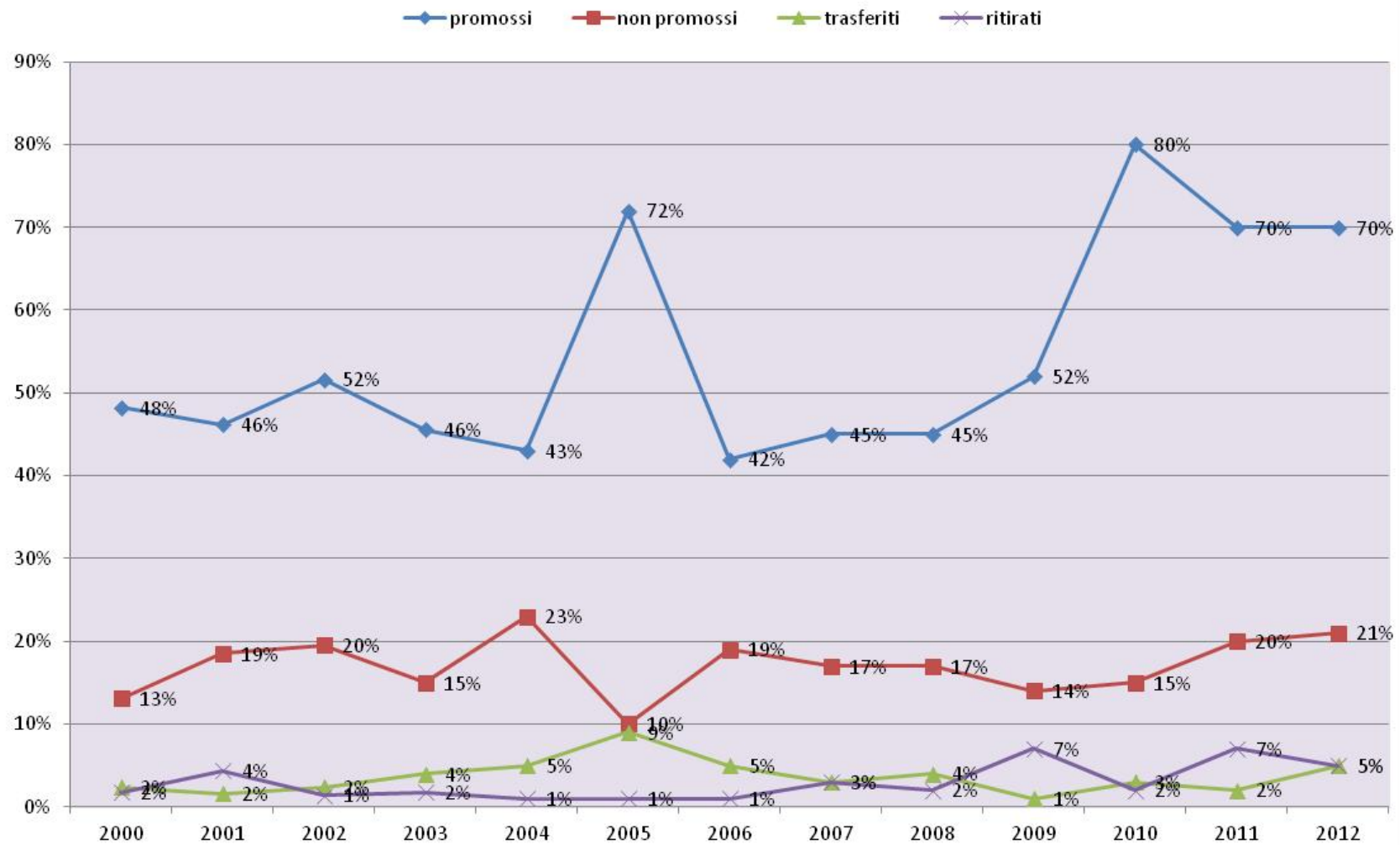
- **GRAFICI**

ELETTROTECNICA



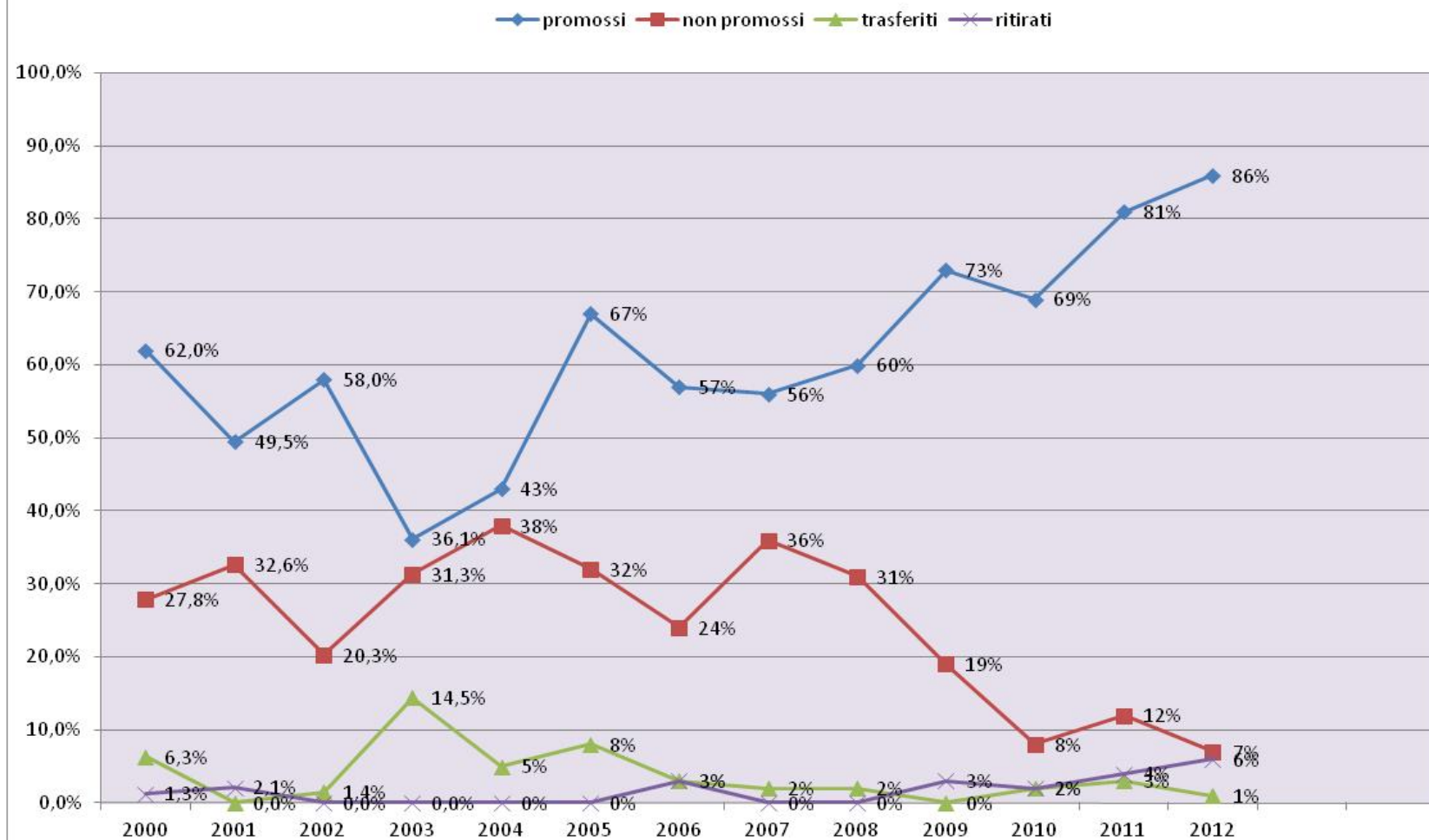
INFORMATICA

INF SETTEMBRE 2012

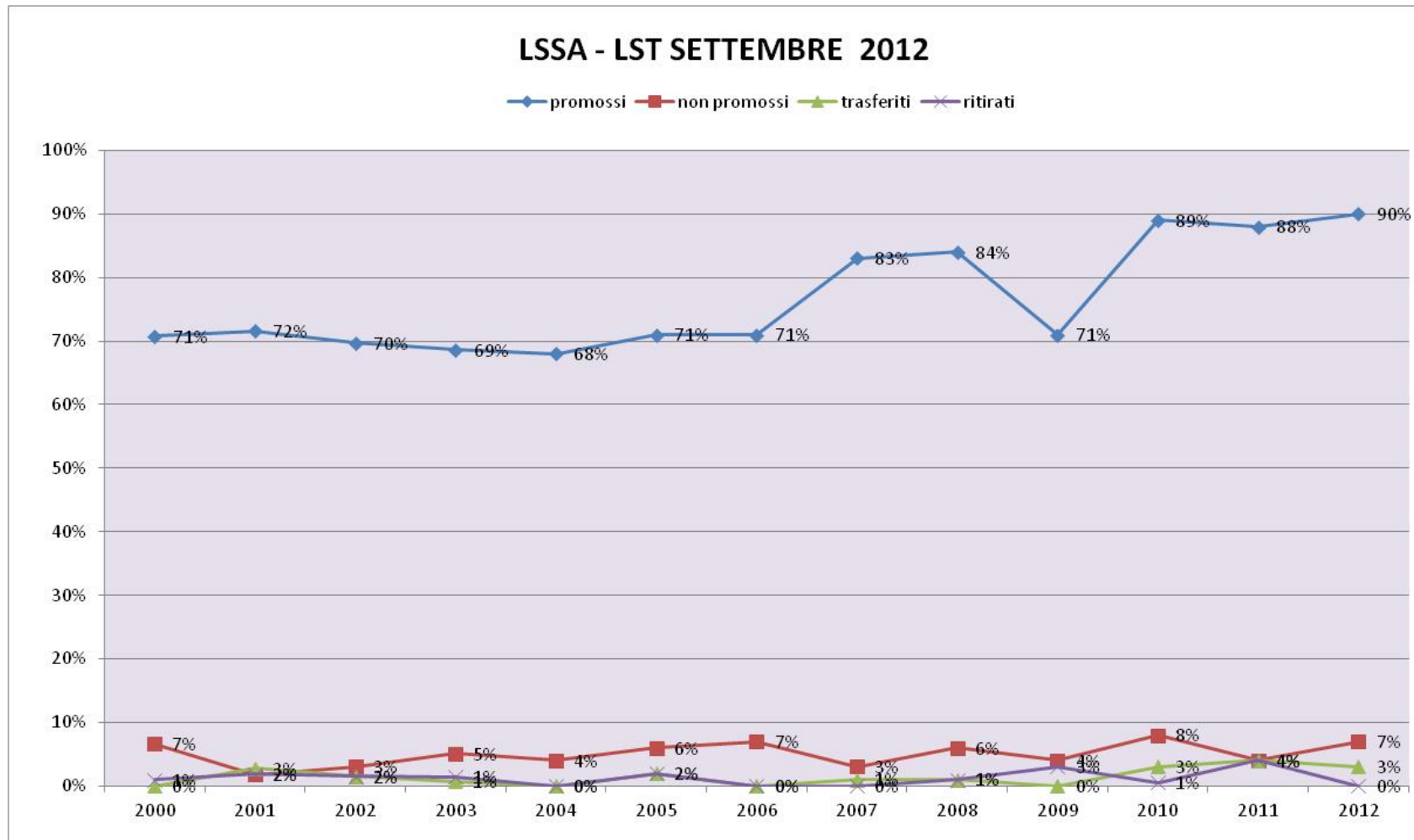


MECCANICA

MECC SETTEMBRE 2012

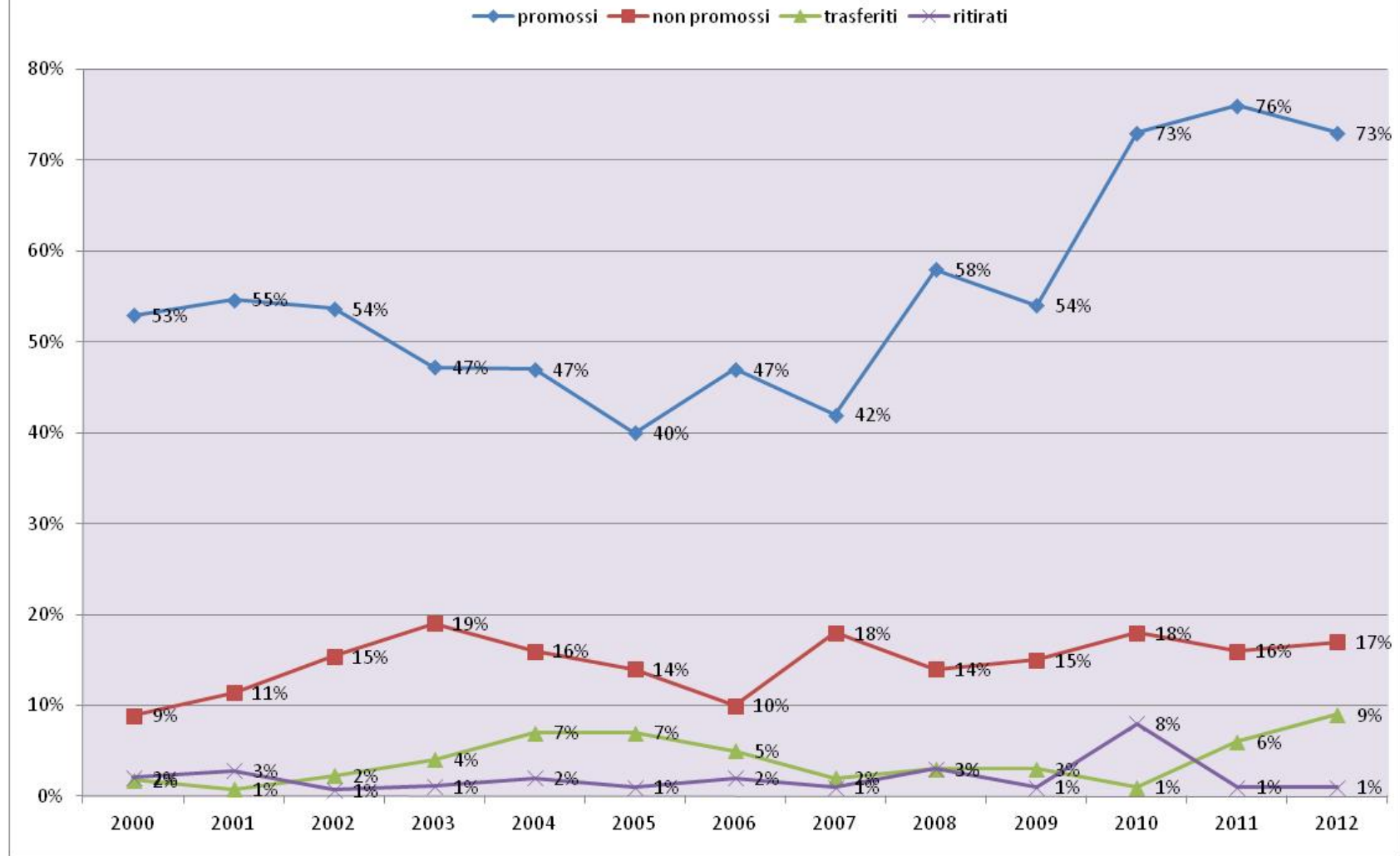


LSSA - LST



BIENNIO ITI

BIENNIO SETTEMBRE 2012



ECONOMICO -IGEA

